

PLATE I

*Chaetogaster limnaei*, von Baer

1. Ventral view. c, crop. m, mouth. n, nephridium. o, oesophagus. p, pharynx. s, stomach. v, vessel. y, x, z, fission zones.

*Dero quadribranchiata*, Cern.

2. Dorsal needle seta.
3. Branchial organ in dorsal view.

*Aulophorus borellii* (Mich.)

4. Ventral needle seta.
5. Dorsal bundle of a specimen with short hair setae.
6. Branchial organ.

*Pristina americana*, Cern.

7. Anterior part of a sexual specimen. 2-12 segments. a, atrium. b, mouth. c, clitellum. e, sperm-sac. g, glandular field. m, male funnel. o, male pore. p, prostate gland. s, spermatheca. v, ovisac.

*Limnodrilus hoffmeisteri*, Clap.

8. Spermatophores.

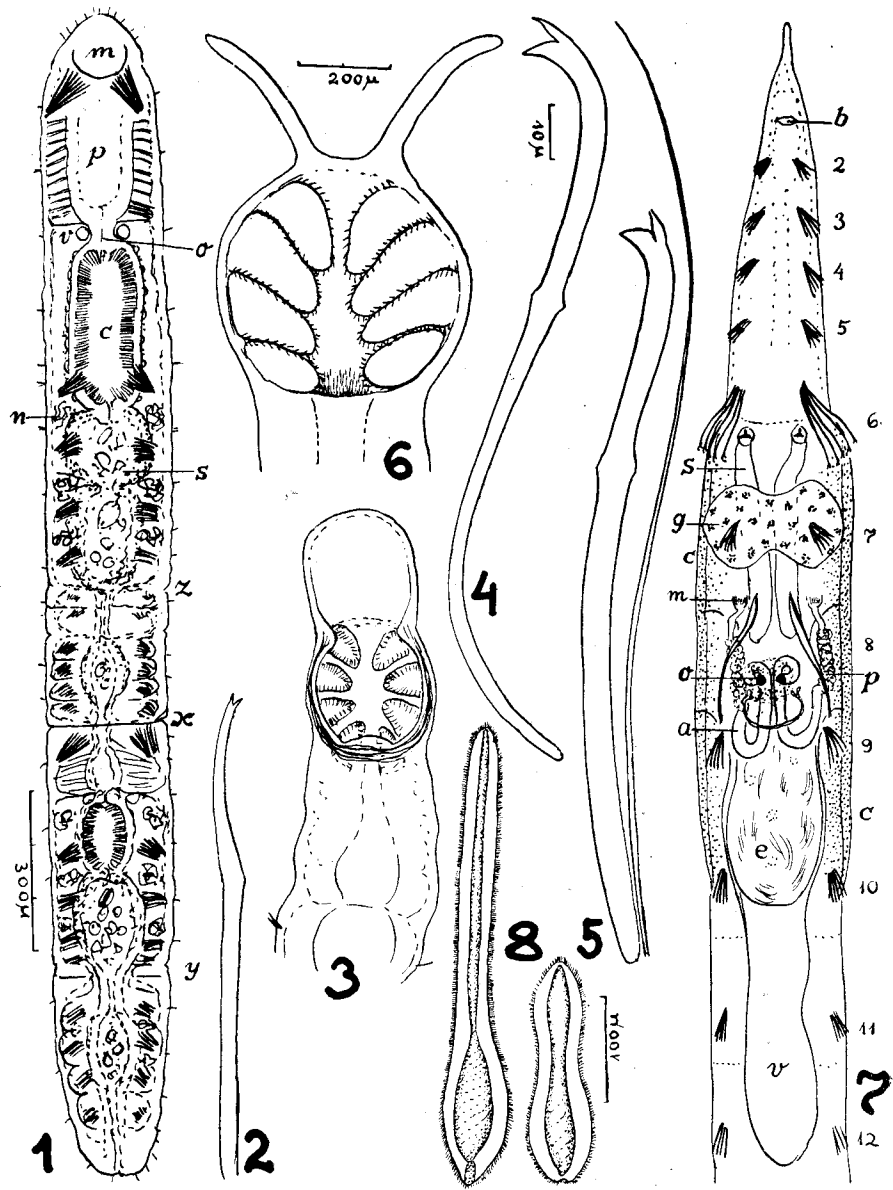


PLATE II

*Limnodrilus parvus*, South.

9. Spermatophores.

*Limnodrilus siolii*, sp. n.

10. Seta of segment 5.
11. Reproductive organs. a, atrium. b, spermathecal pore. c, clitellum. d, efferent duct. e, sperm-sac. f, female funnel. j, ejaculatory duct. m, male funnel. o, ovary. p, penis-papilla. r, prostate gland. s, duct of spermatheca. t, testes. u, ampulla of spermatheca.
12. Male copulatory organ.
13. Spermatophore from spermatheca.
14. Spermatophore sticking to the surface.

*Aulodrilus cernosvitovi*, sp. n.

15. Ventral needle seta.
16. [See plate III].
17. Dorsal bifid needle seta.
18. Dorsal oar-shaped needle seta.
19. Lateral view of anterior portion of an asexual worm.

PLATE III

*Aulodrilus cernosvitovi*, sp. n.

16. Dorsal setal bundle of segment 8.
20. A, lateral, B, dorsal view of the anterior part of a sexual worm.  
a, atrium. b, brain. c, copulatory chamber. d, ejaculatory duct.  
e, efferent duct. f, female pore. g, prostate gland. h, hearts.  
i, intestine. m, mouth. o, ovaries. p, pharynx. q, clitellum. s,  
septum. t, testes. u, setae. v, vessel. w, ovisac. x, sperm-sac.
21. Sagittal section of the male apparatus.

